



ROMA CAPITALE
MUNICIPIO ROMA 9 (ex 12)

RILIEVO DEL COMPENDIO IMMOBILIARE
SITO IN ROMA VIA CASTEL DI LEVA 406/416

TAVOLA:

1

DATA: DICEMBRE 2014
FILE: SS_12_14_1
SCALA: 1:100
rev. 1: rev. 4:
rev. 2: rev. 5:
rev. 3: rev. 6:

VISTI E FIRME

Protocolli e Approvazioni:

ELABORATO:

INQUADRAMENTO CARTOGRAFICO,
PIANTE SEZIONI E PROSPETTI

UBICAZIONE:

Roma - Via Castel di Leva n. 406

TIPOLOGIA:

Residenziale (A2)

PROPRIETA':

I.R.A.S. - I.P.A.B. ROMA CAPITALE

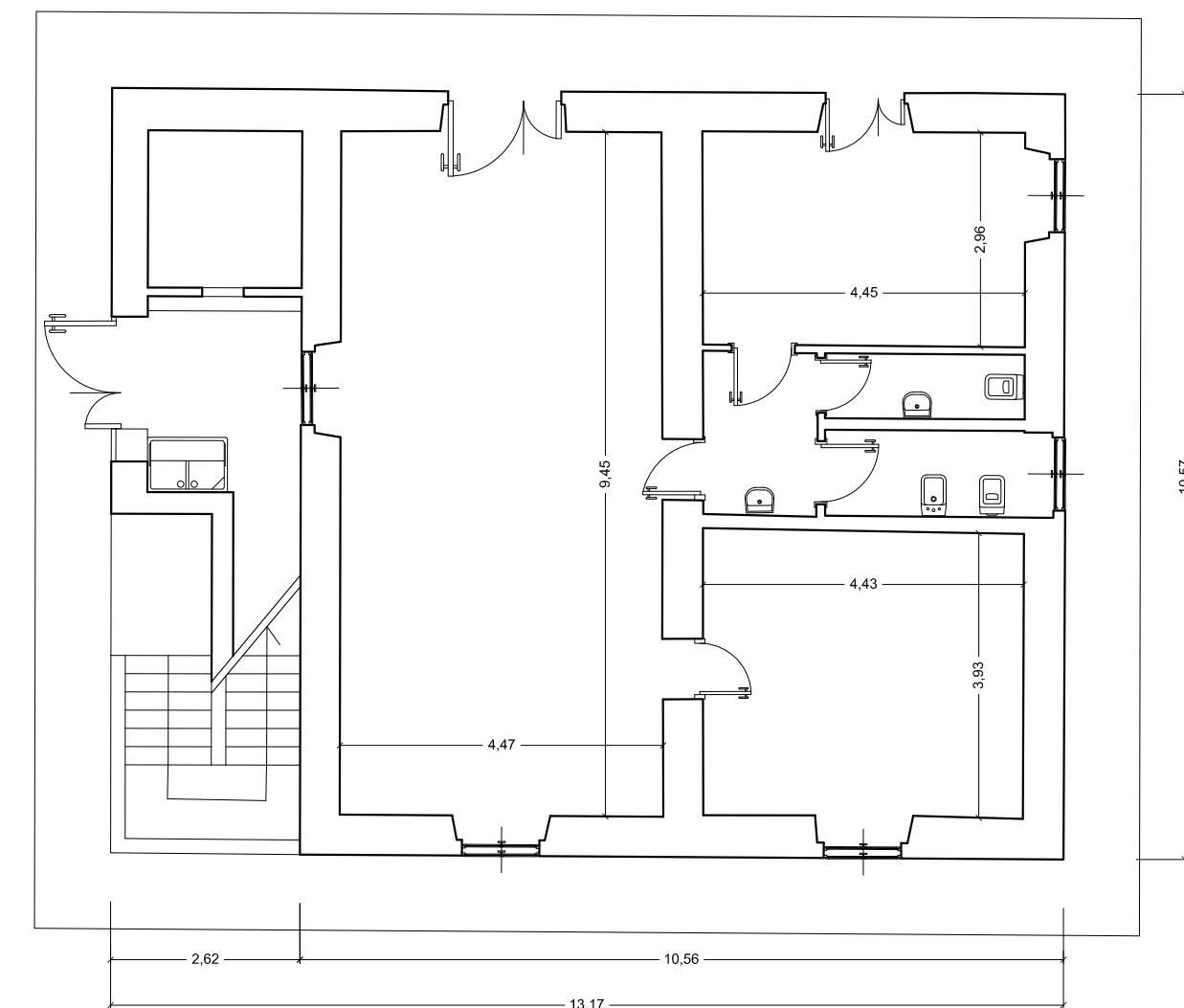
DATI CATASTALI:

foglio: 992 - p.lla 73 - sub. 501/4

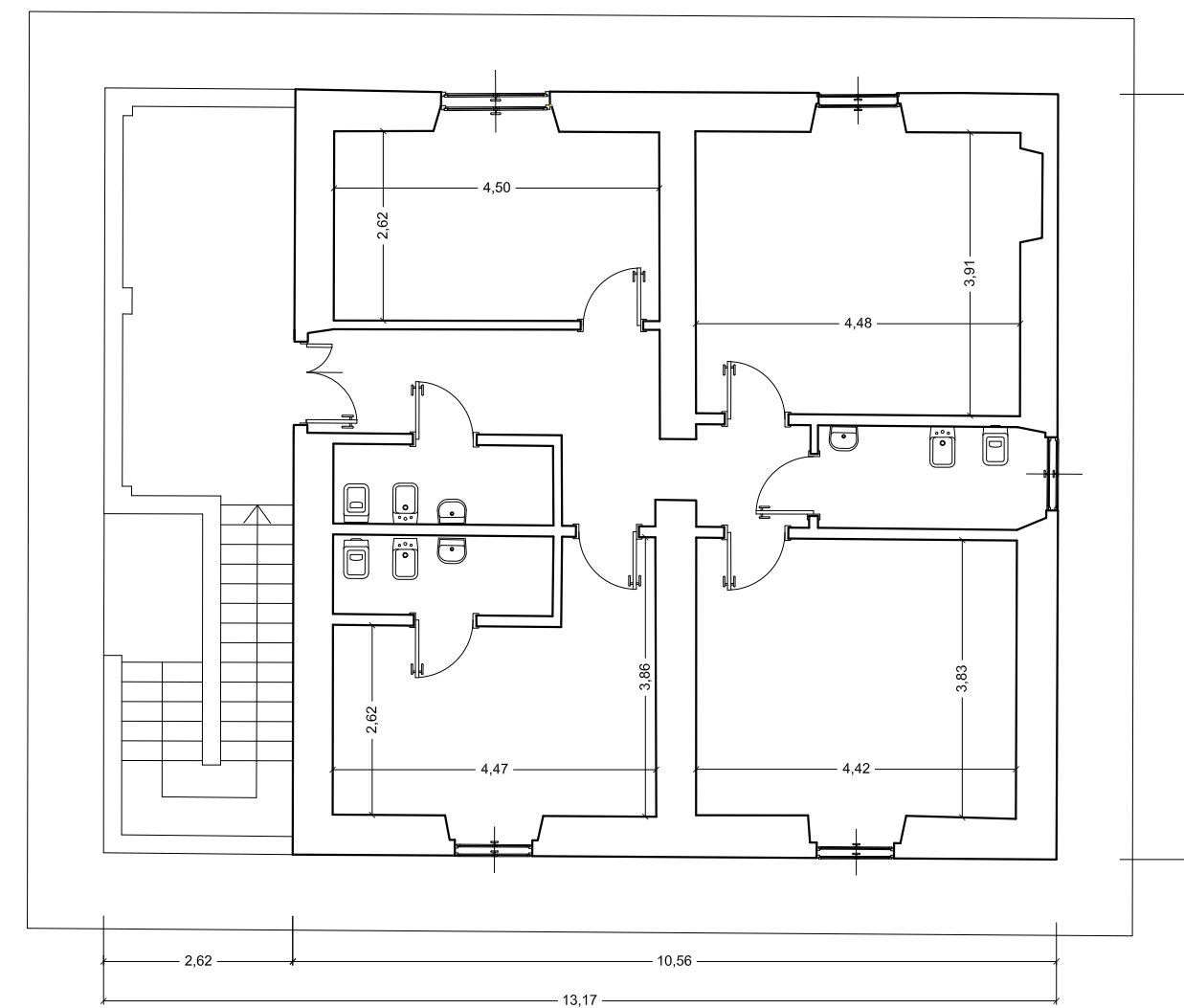
TECNICO INCARICATO:

arch. Stefano Stefalani
Via Innocenzo XI, 41
00165 - Roma
tel. 3286563198
email: stefalani@alice.it

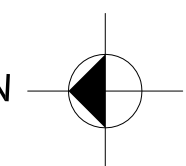
CASALE



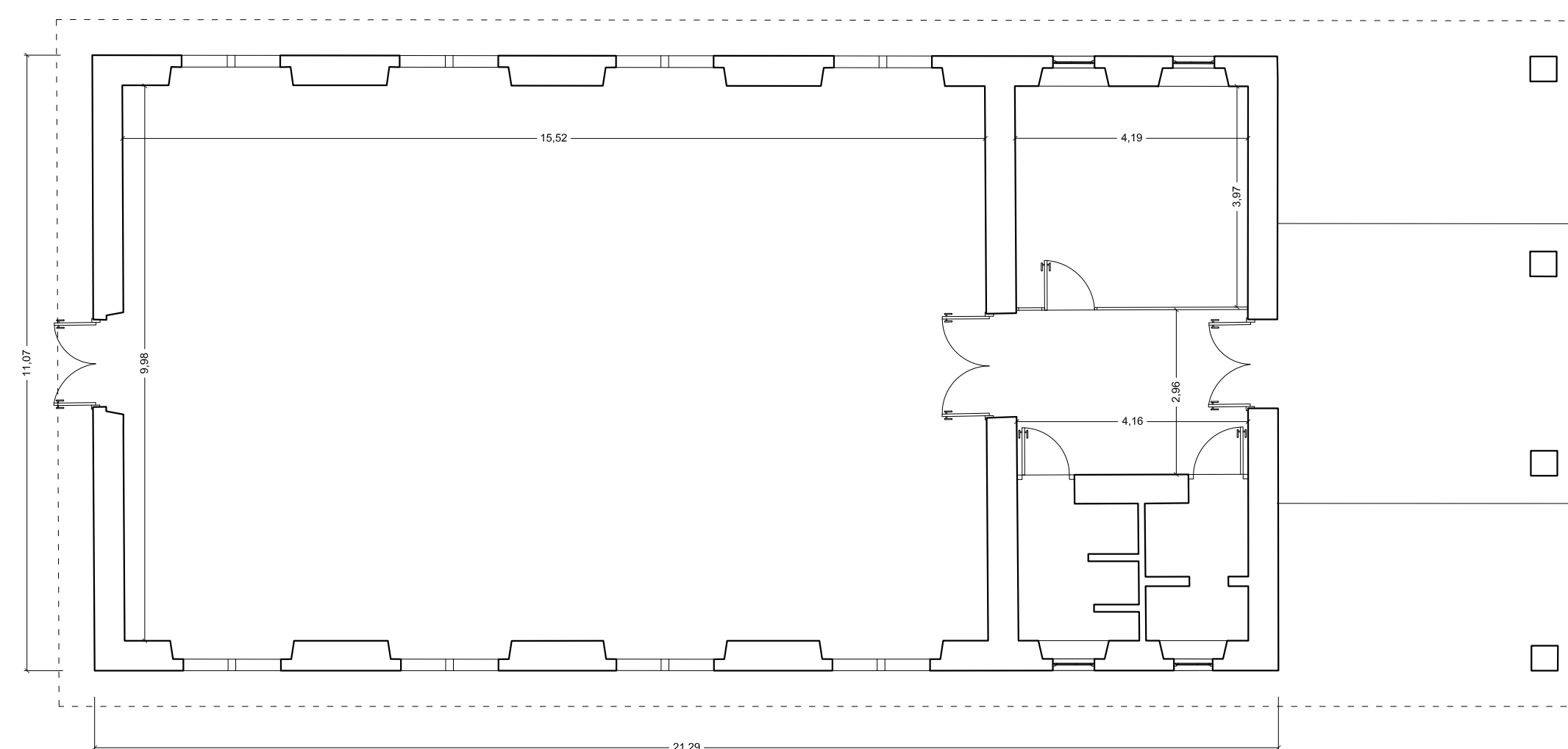
PIANTA PIANO TERRA scala 1:100
H = ML. 3.10



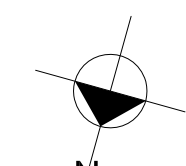
PIANTA PIANO PRIMO scala 1:100
H = ML. 2.90



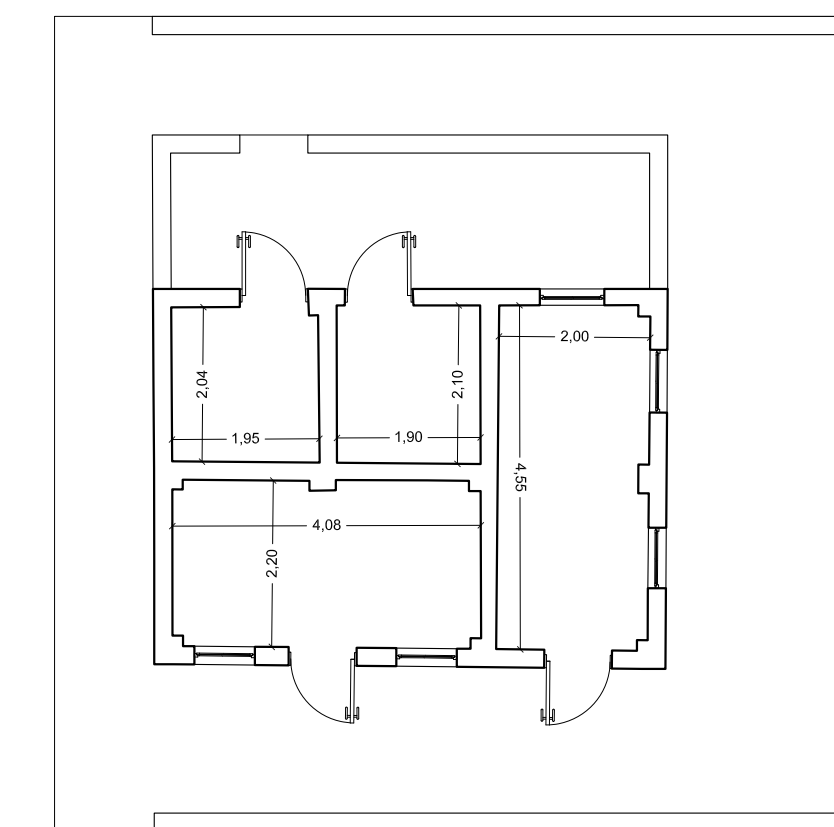
ANNESSO AGRICOLO (EX STALLA) - H MEDIA=ML 5.18



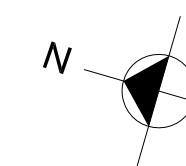
Scala 1:100



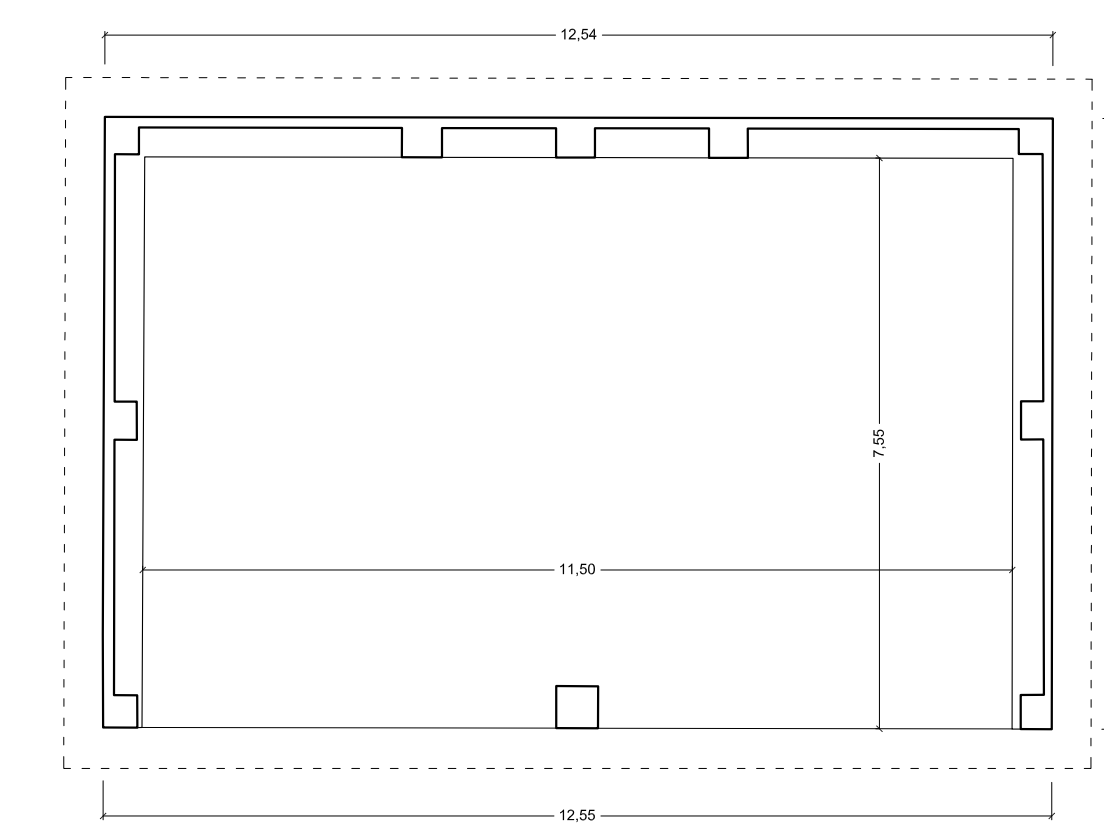
MAGAZZINO



Scala 1:100



ANNESSO AGRICOLO (FIENILE/PORCILAIA)



Scala 1:100

