



ROMA CAPITALE
MUNICIPIO ROMA 9 (ex 12)

RILIEVO DEL COMPENDIO IMMOBILIARE
SITO IN ROMA VIA CASTEL DI LEVA 406/416

1	TAVOLA:	DATA: DICEMBRE 2014
		FILE: SS_12_14_-1
		SCALA: 1:100
	rev. 1:	rev. 4:
	rev. 2:	rev. 5:
	rev. 3:	rev. 6:

ELABORATO:
INQUADRAMENTO CARTOGRAFICO,
PIANTE SEZIONI E PROSPETTI

UBICAZIONE:
Roma - Via Castel di Leva n. 416

TIPOLOGIA:
Residenziale (A2)

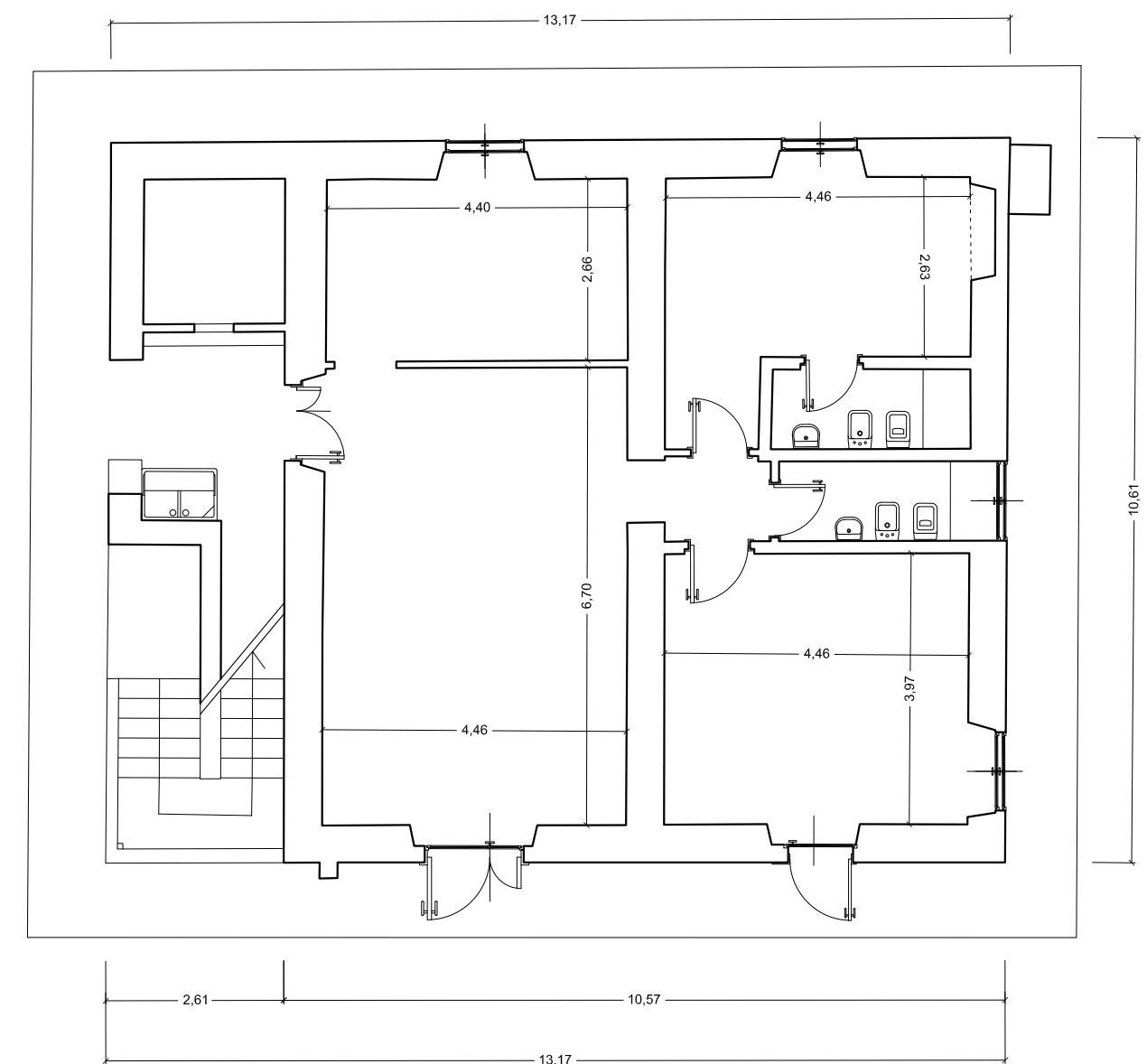
PROPRIETA':
I.R.A.S. - I.P.A.B. ROMA CAPITALE

DATI CATASTALI:
foglio: 992 - p.lle 95/96/97 - sub. 1/2/3

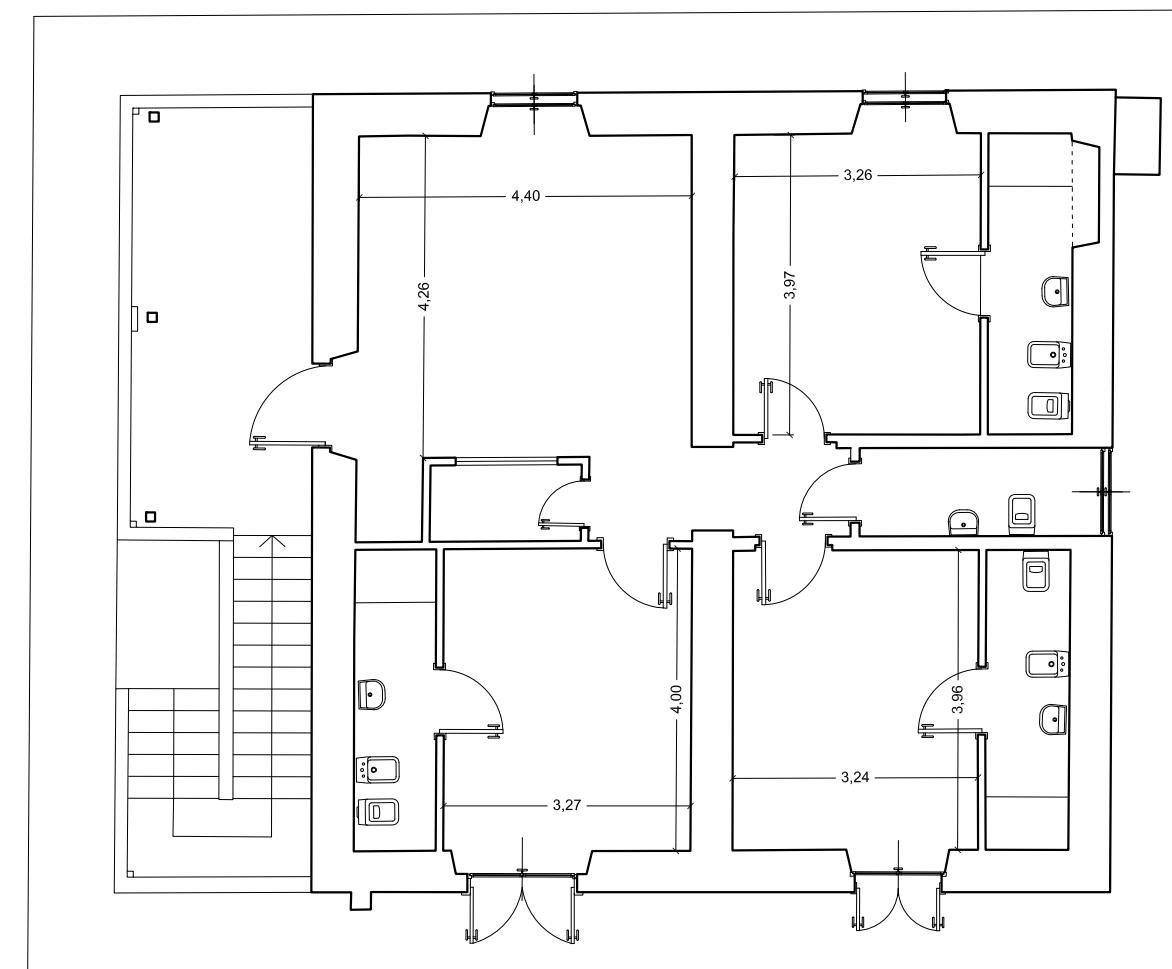
TECNICO INCARICATO:

arch. Stefano Stefanani
Via Innocenzo XI, 41
00165 - Roma
tel. 3286563198
email: stefalani@alice.it

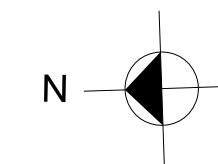
CASALE



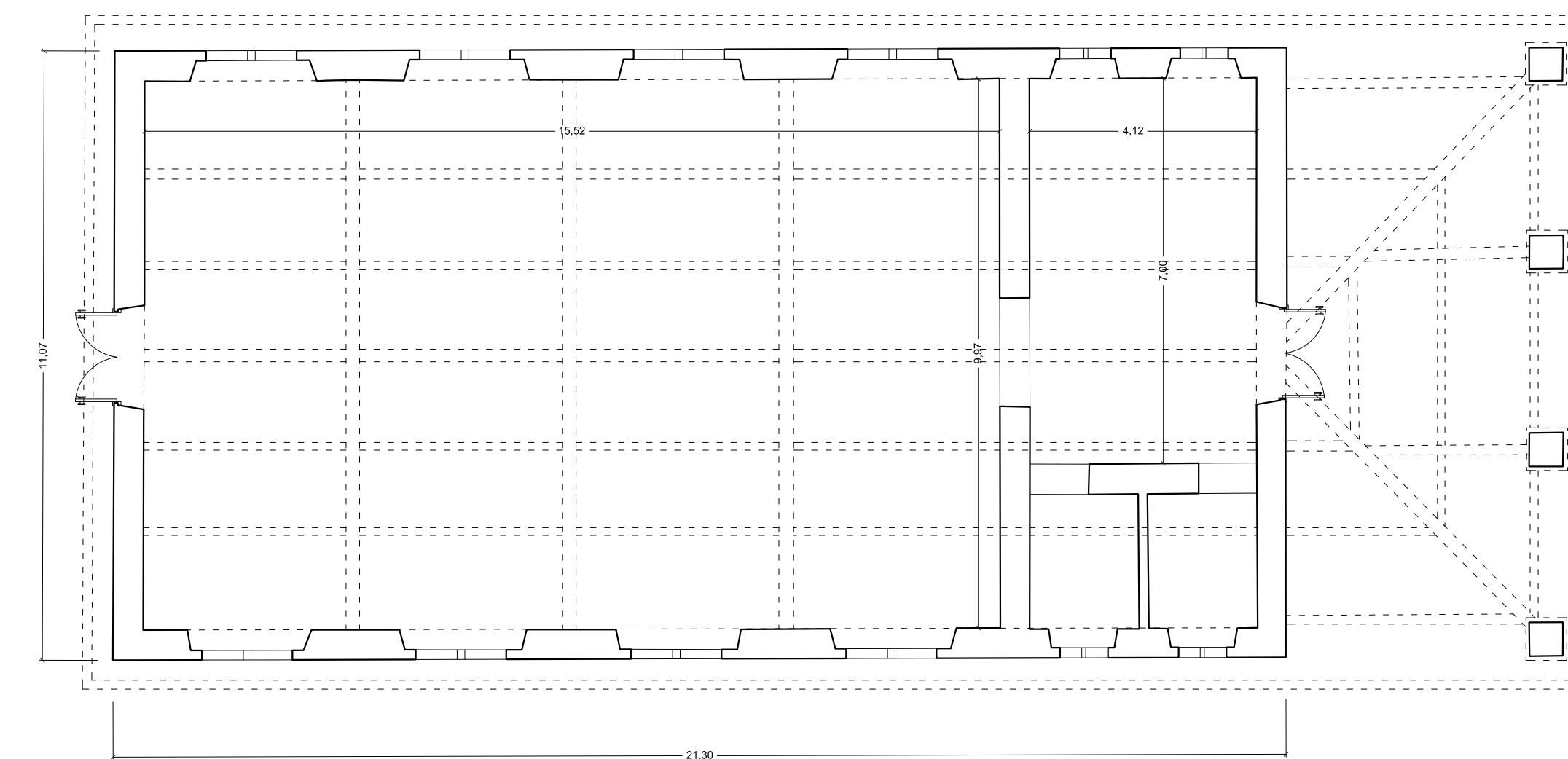
PIANTA PIANO TERRA scala 1:100
H = ML. 3.10



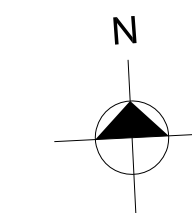
PIANTA PIANO PRIMO scala 1:100
H = ML. 2.90



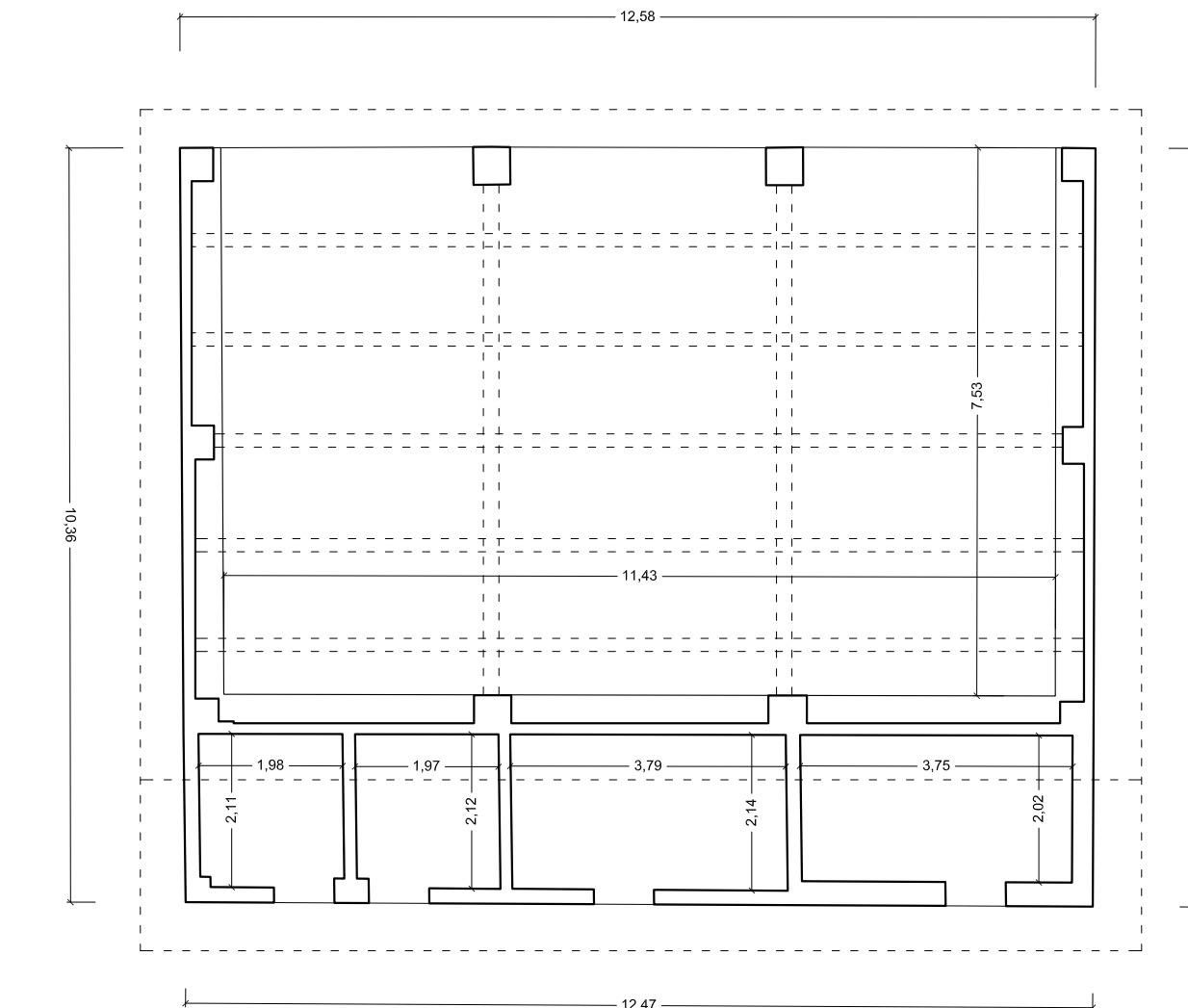
ANNESSE AGRICOLO (EX STALLA) - H MEDIA=ML 5.25



Scala 1:100



ANNESSE AGRICOLO (FIENILE/PORCILAIA)



Scala 1:100

